

[Home](#) > [Shows](#) > "Guiding Light" Alumni Yearbook

"Guiding Light" Alumni Yearbook

April 15, 2009 7:00 PDT By Horacio Rodriguez



Photo: Getty Images

.....
"Yup, I did soaps ... before I got lovably strange."

"Guiding Light" **may have been cancelled (although Lifetime may be our "Light" in shining armor)** -- but we've got all those Springfield memories to pull us through the grief. And since it's not leaving us until September, we have time to reminisce about where our love affair with the show began.

Of course, any affinity to a beloved series begins with its characters -- and the actors who've graced their personas. "Guiding Light"'s been on for decades, so it's no shock to see such a long and distinguished list of alumni. Some are currently on your favorite primetime dramas. There are plenty of surprises too; who knew Darth Vader once played a doctor? And Christopher Walken? Really?

Visit the Alumni Yearbook and make sure to sign it for us! K.I.T.!

[Home](#) > [Shows](#) > "Guiding Light" Alumni Yearbook

Photos

"Guiding Light" Alumni Yearbook

James Lipton (1952-1962)

He asks actors things like "What was your motivation?" and "Boxers or briefs?" on "Inside the Actors Studio," but Lipton played Dr. Richard "Dick" Grant for 10 years – and also wrote for the show.

◀ 1 of 21 ▶

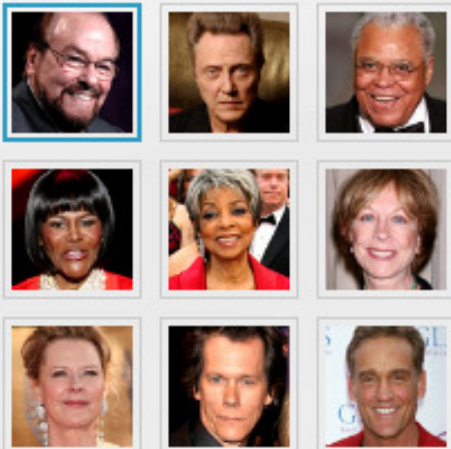


Photo: Getty Images

[Home](#) > [Shows](#) > "Guiding Light" Alumni Yearbook

Photos

"Guiding Light" Alumni Yearbook

Christopher Walken (1954-1956)

Walken is the kind of guy you want at your party – the stories this guy must have after being in the biz for over 50 years! – but as a kid, he spent two years playing Michael 'Mike' Bauer.



2 of 21



Photo: Getty Images

[Home](#) > [Shows](#) > "Guiding Light" Alumni Yearbook

Photos

"Guiding Light" Alumni Yearbook

James Earl Jones (1966)

He's an American acting legend and the voice of Darth Vader – but on "Guiding Light" he played Dr. James "Jim" Frazier. Just imagine him barking medical commands in that million-dollar baritone.



3 of 21



Photo: Getty Images

[Home](#) > [Shows](#) > "Guiding Light" Alumni Yearbook

Photos

"Guiding Light" Alumni Yearbook

Cicely Tyson (1966)

She's the ex-wife of jazz genius Miles Davis and has had a distinguished career spanning decades. But in 1966 she played Martha Frazier, James Earl Jones's wife -- before she was replaced by ...



4 of 21

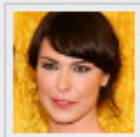


Photo: Getty Images

[Home](#) > [Shows](#) > "Guiding Light" Alumni Yearbook

Photos

"Guiding Light" Alumni Yearbook

Ruby Dee (1967)

... Oscar nominee (for 2007's "American Gangster") and fellow acting icon Ruby Dee. She played Martha Frazier in 1967 before the character was written out of the show entirely.



5 of 21

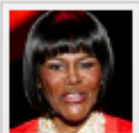


Photo: Getty Images

[Home](#) > [Shows](#) > "Guiding Light" Alumni Yearbook

Photos

"Guiding Light" Alumni Yearbook

Christina Pickles (1970-1972)

As nurse Helen Rosenthal on "St. Elsewhere," Pickles garnered four Emmy nominations – and she later played Ross and Monica's mom on "Friends." But before it all, she played "GL"'s Linell Conway.



6 of 21



Photo: Getty Images

[Home](#) > [Shows](#) > "Guiding Light" Alumni Yearbook

Photos

"Guiding Light" Alumni Yearbook

JoBeth Williams (1976-1977)

She's best remembered for playing Diane Freeling and "going into the light" to save her daughter in "Poltergeist" – but Williams spent a year playing Brandy Sheloe early in her career.



7 of 21

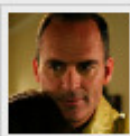


Photo: Getty Images

[Home](#) > [Shows](#) > "Guiding Light" Alumni Yearbook

Photos

"Guiding Light" Alumni Yearbook

Kevin Bacon (1980-1981)

After "Animal House" but before "Footloose," Kevin played Tim Werner – a teen with a drinking problem. Maybe he drank to forget the coming "Six Degrees of Kevin Bacon" game.



8 of 21

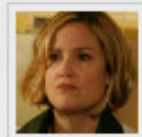


Photo: Getty Images

[Home](#) > [Shows](#) > "Guiding Light" Alumni Yearbook

Photos

"Guiding Light" Alumni Yearbook

John Wesley Shipp (1980-1984)

Shipp played Kelly for four years before playing a super-fast superhero on the short-lived series "The Flash" ... and becoming Dawson's dad on "Dawson's Creek."



9 of 21

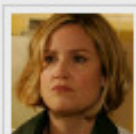


Photo: Getty Images

[Home](#) > [Shows](#) > "Guiding Light" Alumni Yearbook

Photos

"Guiding Light" Alumni Yearbook

Frances Fisher (1985)

Before (most recently) appearing on "Eureka" and "The Shield" -- and being one of Clint Eastwood's exes -- she played Suzette Saxon, whose character was written off by being sent to jail.



10 of 21

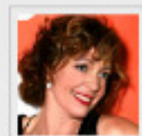


Photo: Getty Images

[Home](#) > [Shows](#) > "Guiding Light" Alumni Yearbook

Photos

"Guiding Light" Alumni Yearbook

Ian Ziering (1986-1988)

Before he was Steve Sanders on "Beverly Hills, 90210," Ziering put in his TV time as Cameron Stewart for a couple years before the character was eventually written out.



11 of 21

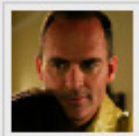
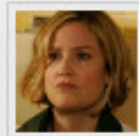
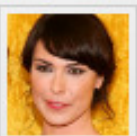
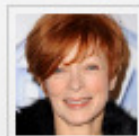


Photo: Getty Images

[Home](#) > [Shows](#) > "Guiding Light" Alumni Yearbook

Photos

"Guiding Light" Alumni Yearbook

Michelle Forbes (1987-1989)

On "In Treatment," she's married to therapist Gabriel Byrne – and also plays Mary Ann on "True Blood." Before hanging with vampires, she played Dr. Sonni Welles ... and her evil twin Solita!



12 of 21

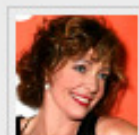
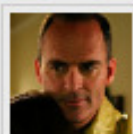
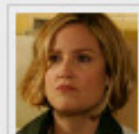
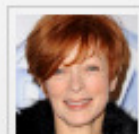


Photo: Getty Images

[Home](#) > [Shows](#) > "Guiding Light" Alumni Yearbook

Photos

"Guiding Light" Alumni Yearbook

Sherry Stringfield (1989-1992)

She was part of "ER"'s original cast and was also there for the final episode. As the first Blake Thorpe Spaulding Marler, she was a maneater and always had great hair.



13 of 21



Photo: Getty Images

[Home](#) > [Shows](#) > "Guiding Light" Alumni Yearbook

Photos

"Guiding Light" Alumni Yearbook

Mark Derwin (1990-1993)

Derwin's been all over daytime -- as Adrian Hunter on "The Young and the Restless," then A.C. Mallet on "Guiding Light" before playing Dr. Ben Davison on "One Life to Live" for a few years.



14 of 21

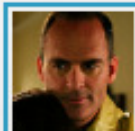


Photo: Getty Images

[Home](#) > [Shows](#) > "Guiding Light" Alumni Yearbook

Photos

"Guiding Light" Alumni Yearbook

Melina Kanakaredes (1991-1995)

Melina spends a lot of time these days around corpses and mysterious stains on "CSI: New York" – but for four years, she played Eleni Andros, who married Frank after a stint with Alan-Michael.



15 of 21



Photo: Getty Images

[Home](#) > [Shows](#) > "Guiding Light" Alumni Yearbook

Photos

"Guiding Light" Alumni Yearbook

Allison Janney (1993-1995)

On "The West Wing," she was the sharp-witted Press Secretary – but for two years in the '90s, she was comic relief in the form of Spaulding family maid Ginger.



16 of 21

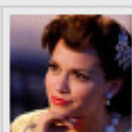
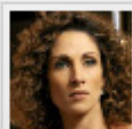
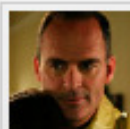
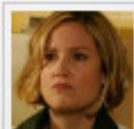


Photo: Getty Images

[Home](#) > [Shows](#) > "Guiding Light" Alumni Yearbook

Photos

"Guiding Light" Alumni Yearbook

Rebecca Budig (1995-1998)

"All My Children"'s Greenlee met an unfortunate airborne wedding-dressed demise -- but before that, she lived in Springfield as Michelle Bauer, leaving in 1998 and replaced by ...



17 of 21

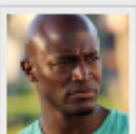
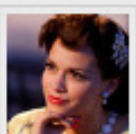
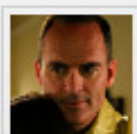
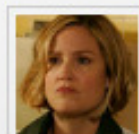


Photo: Getty Images

[Home](#) > [Shows](#) > "Guiding Light" Alumni Yearbook

Photos

"Guiding Light" Alumni Yearbook

Bethany Joy Galeotti (1998-2000)

... the former Joy Lenz, who lived in Springfield for a couple years as New Michelle before moving to "One Tree Hill" and becoming Haley Scott.



18 of 21

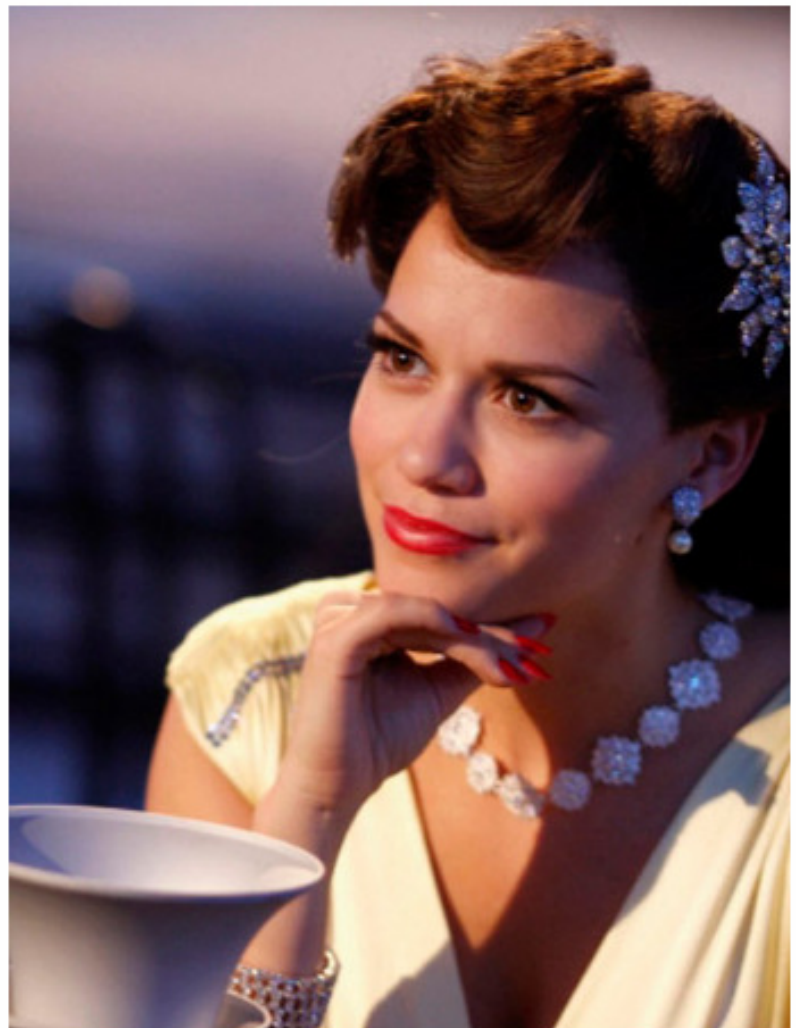
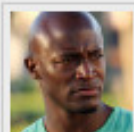
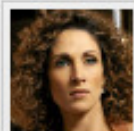
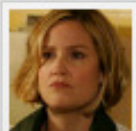


Photo: Getty Images

[Home](#) > [Shows](#) > "Guiding Light" Alumni Yearbook

Photos

"Guiding Light" Alumni Yearbook

Wendy Moniz (1995-1999)

Wendy was the second actress to play Dinah – who married Roger, got with Hart, and then shot him after losing him to Cassie. She's now on "Damages," annoying Glenn Close by dating her teenage son.

◀ 19 of 21 ▶

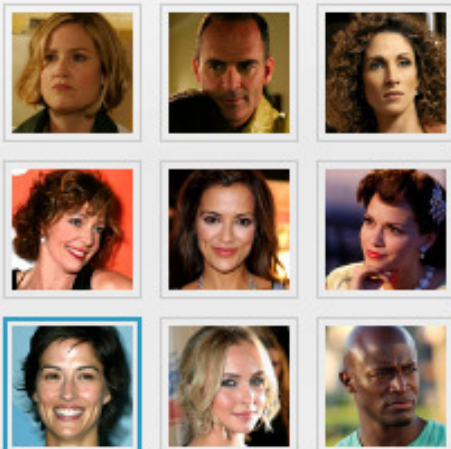


Photo: Getty Images

[Home](#) > [Shows](#) > "Guiding Light" Alumni Yearbook

Photos

"Guiding Light" Alumni Yearbook

Hayden Panettiere (1996-2000)

Before her super-cheer days on "Heroes," Hayden played troubled young Elizabeth "Lizzie" Spaulding, who committed manslaughter, got kidnapped, and had leukemia. Long way from saving the world.



20 of 21

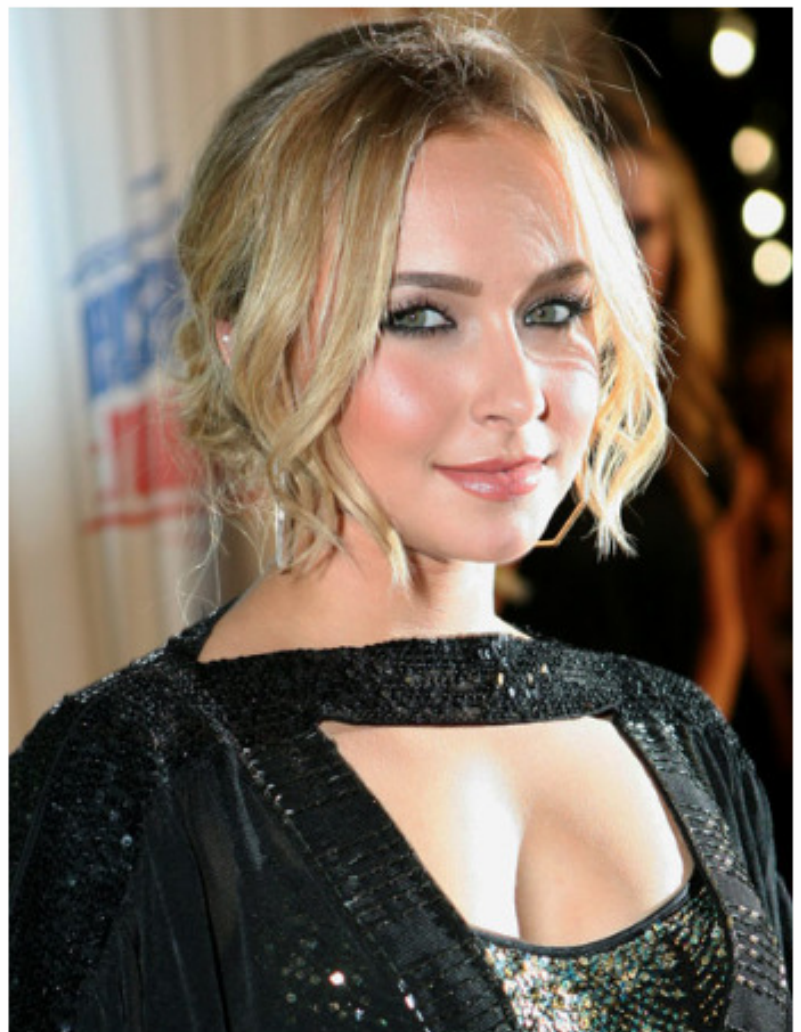
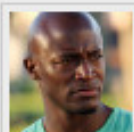


Photo: Getty Images

[Home](#) > [Shows](#) > "Guiding Light" Alumni Yearbook

Photos

"Guiding Light" Alumni Yearbook

Taye Diggs (1997)

Diggs is a smooth operator on "Private Practice" – but during his brief "GL" gig, he played slick music producer Adrian "Sugar" Hill. With a name like that, it's hard not to be cool.



21 of 21

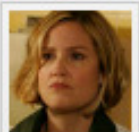


Photo: Getty Images